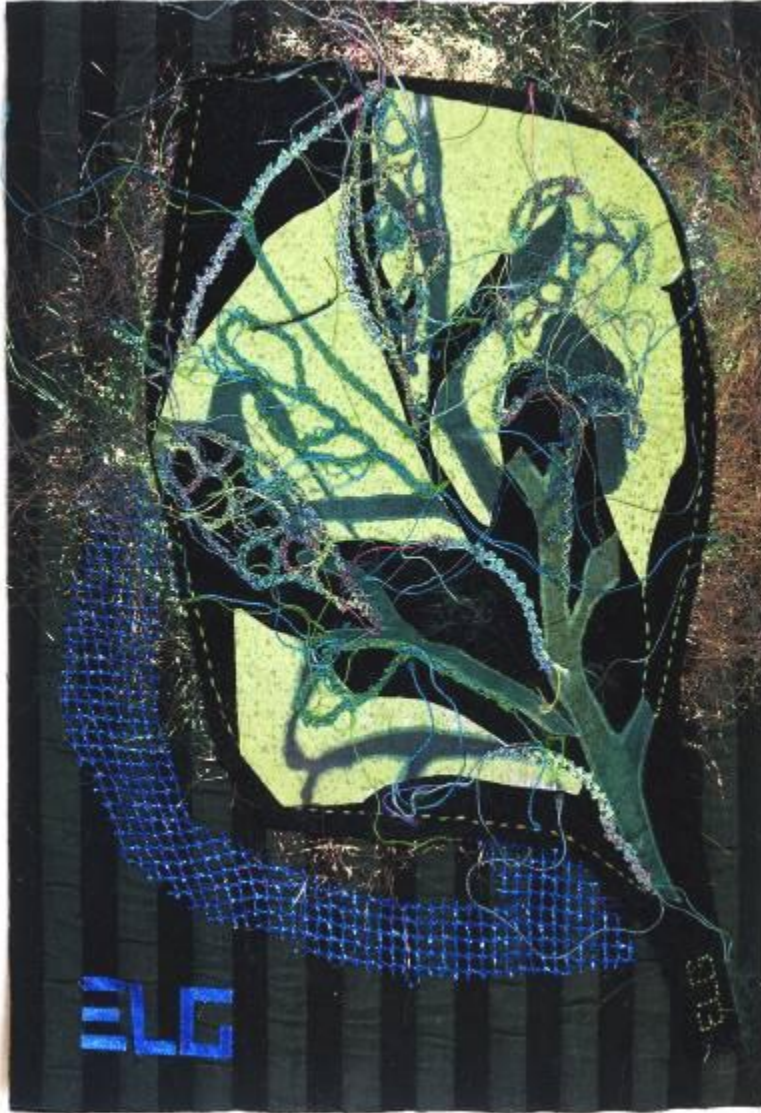


## ELINA LUSIS-GRINBERGA

### Inspiring nature – leaf motif



The aim of this class is to create a unique art piece that reflects the creative approach to depicting and stylising of the natural forms. The students will learn how to apply the machine-embroidered lace as a part of the design to incorporate lightness and transparency into artwork. By experimenting with different fabrics and combinations of techniques the participants will create an original art piece that may also further function as an idea or a part of a bigger quilt.

Class level: All levels

Class length: 3 hours

## **TEACHER'S CLASS NEEDS (to be supplied by the organizers):**

Sewing machines

Iron and ironing board

2 small plastic washbowls

2 rolls of kitchen paper towels

## **SUPPLY LIST FOR STUDENTS**

### **Basic Supply list:**

Sewing needles

Sewing threads to match fabrics

Fabric scissors

Pins

Note/sketch paper

Ball point pen

Paper pencil

Eraser

Crayon (or small piece of soap) for drawing on fabric

Paper scissors

Quilter's ruler

Rotary cutter

Cutting mat

Small trash bag

### **Fabrics and length (in cm):**

4-5 cuts (A5) of different fabrics (soft cotton, silk, synthetics) in green shades, - several bright and lively colours as well as contrasting, (can be plain, tabby and/or batik). Black felt (20 x 30cm). Neutral, dark background fabric (ca. 25 x 30cm).

### **Other supplies:**

Fusible interfacing (30 x 50cm); batting (30 x 50cm)(optional);

Sewing threads to match fabrics machine embroidery threads – variegated, bright coloured and also matching rayon threads, few small pieces of shiny “net” material, Angelina Fibres (fusible), 2 sheets (A4) water soluble plastic (for example, Avalon), 2 sheets (A4) of double -sided adhesive web (for example, Bondaweb)